



Catalogue 2017-2018

# Hybrid Multi



Whatever the size of your home, whether it is a new build or a renovation, we have systems which will provide you with the ideal climate. A licensed Daikin installer can advise you about which heating system will have the longest service life and lowest energy costs. They can also tell you which system provides the best combination of comfort and environmental responsibility. In this guide, you will find information about the heat pump, the most efficient system for indoor comfort. This gentle, yet cutting-edge technology will provide you with the indoor climate you want while minimising impact on the environment.





## Content

Heat pumps	4
Multi systems	6
Combinations & technical data	7
Connectable units	8
Daikin Online Controller	10
Trust Daikin	12

# Heat pumps, the solution for those with an eye to the future

A heat pump is a system designed to extract and transport heat, allowing you to maintain constant indoor temperature all year round.

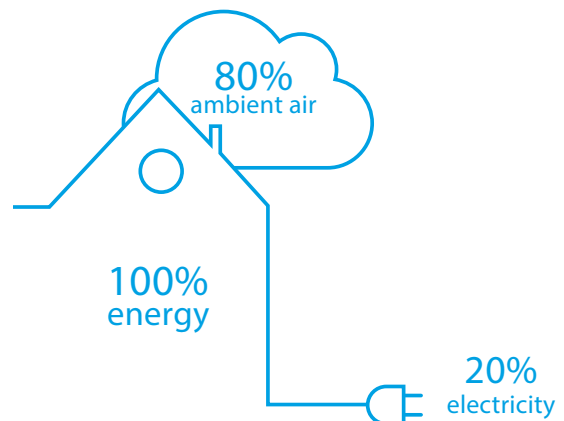
For complete comfort, Daikin's Altherma units can also provide your hot water.



## A renewable resource

Heat pumps extract heat from the outside air, even in cold weather. They use an electrically powered compressor and are extremely effective at heating a flat or a house. Daikin heat pumps are silent and discreet, and use state-of-the-art technology to keep your energy bills as low as possible.

With a Daikin heat pump, 80% of the energy used to heat your home comes from the outside air, a free and infinitely renewable resource! For cooling, the system is reversed, extracting heat from the indoor air.





## 1. Heating

In winter, the refrigerant circulating in the system captures heat from the outside air and releases it indoors in the form of gentle warming.

## 2. Hot water for domestic use

Some heat pumps, such as Daikin Altherma, also allow you to enjoy the year-round benefits of hot water for your entire household!

## 3. Cooling

During the summer, the system is reversible: the refrigerant in the circuit absorbs heat from a room and vents it outdoors.

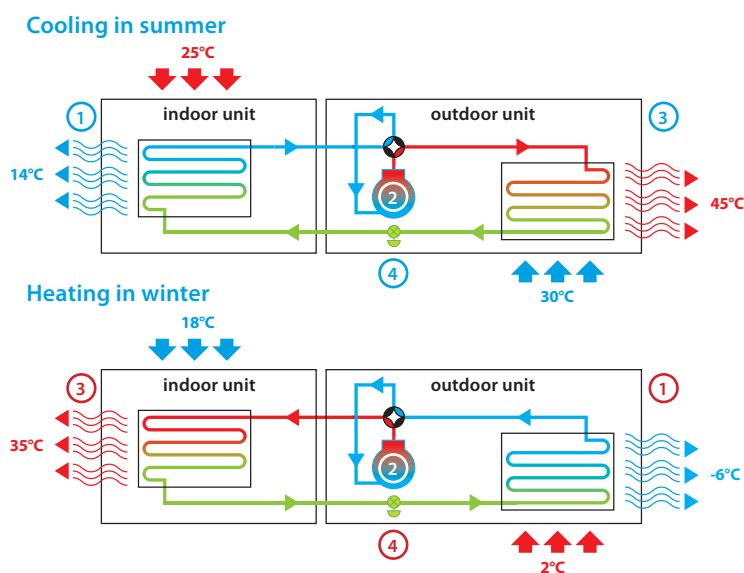
## 4. Connectivity

Always in control, control your climate from any place, at any time with your smartphone.

## A perpetual cycle

A refrigerant circulates in a closed circuit inside the system in order to transfer heat to and from the air outside and inside your home.

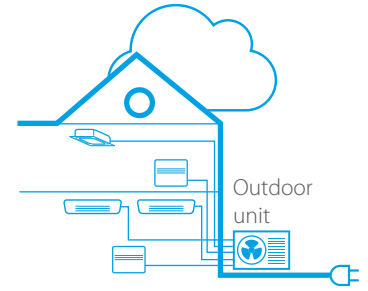
- › The evaporator enables the refrigerant to extract heat from the outside air by changing from a liquid state to a gas.
- › The electric compressor then compresses the gas, which raises its temperature.
- › The condenser then allows the gas to transfer its heat to the heating system as it returns to a liquid state.
- › The expansion valve lowers the pressure of the refrigerant, which triggers its vaporisation to begin a new cycle.



## Multi systems

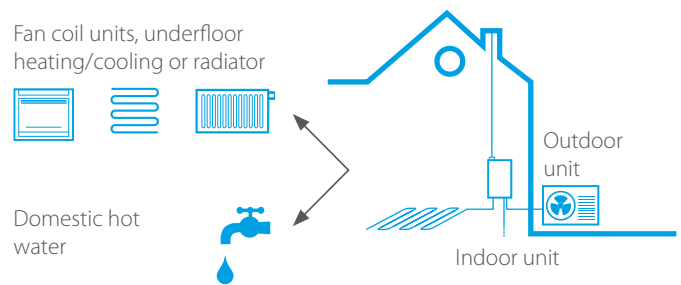
### What is a multi-split system?

With **1** multi **outdoor unit**, up to **5 indoor units** can be connected. All indoor units can be **individually controlled**. If your needs change, the system evolves as well. Additional indoor units can, in fact, be installed at more than one go.



### What is a Hybrid heat pump?

A hybrid heat pump combines air to water heat pump technology with gas condensing technology by searching for the most economical condition depending on the specific operation conditions.

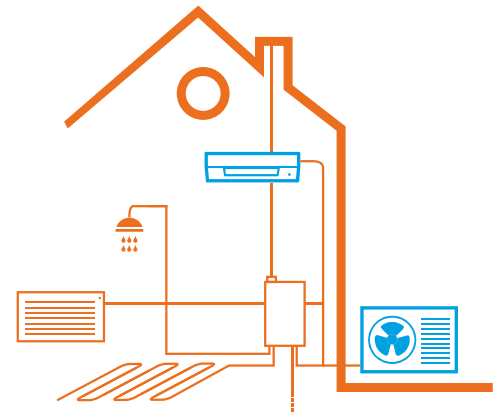


### What is a Hybrid Multi system?

The Hybrid Multi combines a multi system with a hybrid heat pump. One port can be used for hot water production, while with the other ports, you can cool your home.

The Hybrid Multi is therefore an **all-in-one system for cooling, heating and hot water purposes**.

Compatible with our range of split & Sky Air units, radiators and underfloor heating, the Hybrid Multi is your smart solution for heating, cooling and domestic hot water for year-round climate comfort.



### Benefits of the Hybrid Multi system

#### ✓ Perfect for renovations

In apartments with existing gas boiler, where user wants to have air conditioning too. Also, there is no need to replace existing radiators (up to 80°C) and pipe work.

#### ✓ Provides sufficient heat

All heat loads are covered up to 32kW in renovation applications

#### ✓ Small footprint inside & outside

Just one outdoor unit and hybrid indoor unit can fit into the place of the old boiler due to its compact dimensions

#### ✓ The most economical

Depending on outdoor temperature, energy prices and internal heat load, Daikin Altherma hybrid heat pump always selects the most economical mode to operate

#### ✓ Quick & easy installation

As the heat pump indoor unit and gas condensing boiler are delivered as separate units, they are easier to handle, operate and install

#### ✓ Maximum efficiencies

The boiler's dual heat exchanger increases hot water efficiency by up to 15% when compared with traditional gas boilers, while the total system efficiency can reach up to A+++ label.

#### ✓ Wide variety of indoor units

With indoor unit types ranging from smaller wall mounted split units to duct, floor standing or even Sky Air indoors, the system can be fully customized according to the needs and possibilities of the user

#### ✓ Total Wi-Fi control

Control the complete heating & cooling system of your home from one convenient smartphone app, from anywhere, anytime

## Connectable indoor units

Type	Material	2MXM40M	2MXM50M9	3MXM40N	3MXM52N	3MXM68N	4MXM68N	4MXM80N	5MXM90N
Wall mounted	FTXJ20MW	•	•	•	•	•	•	•	•
	FTXJ20MS	•	•	•	•	•	•	•	•
	FTXJ25MW	•	•	•	•	•	•	•	•
	FTXJ25MS	•	•	•	•	•	•	•	•
	FTXJ35MW	•	•	•	•	•	•	•	•
	FTXJ35MS	•	•	•	•	•	•	•	•
	FTXJ50MW		•		•	•	•	•	•
	FTXJ50MS		•		•	•	•	•	•
	CTXM15M	•	•	•	•	•	•	•	•
	FTXM20M	•	•	•	•	•	•	•	•
	FTXM25M	•	•	•	•	•	•	•	•
	FTXM35M	•	•	•	•	•	•	•	•
	FTXM42M		•		•	•	•	•	•
	FTXM50M		•		•	•	•	•	•
	FTXM60M						•	•	•
	FTXM71M							•	•
	FTXP20K3	•	•						
	FTXP25K3	•	•						
	FTXP35K3	•	•						
Floor standing	FVXM25M	•	•	•	•	•	•	•	•
	FVXM35M	•	•	•	•	•	•	•	•
	FVXM50M		•		•	•	•	•	•
Concealed ceiling	FDXM25F3	•	•	•	•	•	•	•	•
	FDXM35F3	•	•	•	•	•	•	•	•
	FDXM50F3		•		•	•	•	•	•
	FDXM60F3					•	•	•	•
	FBA35A			•	•	•	•	•	•
	FBA50A				•	•	•	•	•
FBA60A					•	•	•	•	
Cassette	FCAG35A			•	•	•	•	•	•
	FCAG50A				•	•	•	•	•
	FCAG60A					•	•	•	•
	FFA25A		•	•	•	•	•	•	•
	FFA35A		•	•	•	•	•	•	•
	FFA50A		•		•	•	•	•	•
FFA60A						•	•	•	
Ceiling suspended	FHA35A			•	•	•	•	•	•
	FHA50A				•	•	•	•	•
	FHA60A					•	•	•	•
Concealed floor standing	FNA25A			•	•	•	•	•	•
	FNA35A			•	•	•	•	•	•
	FNA50A				•	•	•	•	•
	FNA60A					•	•	•	•
Altherma Hybrid	CHYHBH05AV32				•	•	•	•	•
	CHYHBH08AV32						•	•	•

For more information on the connectable indoor units please scan the QR codes on the following 2 pages or ask your Daikin Professional.

## Technical details of outdoor units

OUTDOOR UNIT			2MXM40M	2MXM50M9	3MXM40N	3MXM52N	3MXM68N	4MXM68N	4MXM80N	5MXM90N	
Cooling capacity	Min./Nom./Max.	kW	4,0	5,0	4,0	5,2	6,8	6,8	8,0	9,0	
Heating capacity	Min./Nom./Max.	kW	4,2	5,6	4,6	6,8	8,6	8,6	9,6	10,0	
Seasonal efficiency (according to EN14825): best case / worst case multi combination	Cooling	Energy label	A+++ / A++	A+++	A+++	A+++ / A++	A+++ / A++	A+++ / A++	A+++ / A++	A+++ / A++	
		Pdesign	kW	4,00 / 3,00	5,00 / 3,00	4,00 / 3,00	5,20 / 3,00	6,80 / 3,00	6,80 / 3,00	8,00 / 3,00	9,90 / 3,00
		SEER		8,66 / 8,11	8,80 / 8,51	8,64 / 8,50	8,64 / 8,14	8,54 / 7,29	8,54 / 7,29	8,55 / 6,96	8,58 / 7,08
	Heating (Average climate)	Annual energy consumption	kWh	122 / 173	120 / 208	122 / 214	122 / 223	144 / 315	144 / 317	151 / 434	149 / 429
		Energy label		A++	A++	A++ / A+	A++ / A+	A+ / A	A++ / A	A++ / A	A++ / A
		Pdesign	kW	3,20 / 3,00	4,20 / 3,30	5,00 / 3,60	5,00 / 3,60	5,30 / 3,80	5,80 / 3,80	6,23 / 3,27	6,46 / 3,50
	SCOP/A		4,64 / 4,60	4,79 / 4,61	4,65 / 4,24	4,88 / 4,27	4,34 / 3,83	4,65 / 3,83	4,80 / 3,87	4,68 / 3,86	
	Annual energy consumption	kWh	908 / 974	965 / 1275	1091 / 1598	1084 / 1590	1354 / 1851	1354 / 1942	1176 / 2177	1259 / 2252	
Dimensions	Unit	HeightxWidthxDepth	mm			734x958x340					
Weight	Unit		kg		57		62		63		
Sound pressure level	Cooling	Nom	dBa		48		48		49		
	Heating	Nom	dBa		50		48		49		
Connectable indoor units			2		3		4		5		
Max. connectable indoor capacity		kg	6,0		8,5		11,0		14,5		

# Connectable units

Scan the QR codes with your smartphone or tablet to find out more details about the specific units online.

## Split & Sky Air units



**Daikin Emura design wall mounted unit (FTXJ-MW/S)**

This award-winning European design unit is available in two stylish finishes, silver and anthracite or pure matt white. Controlled via a user-friendly remote control or smartphone app.



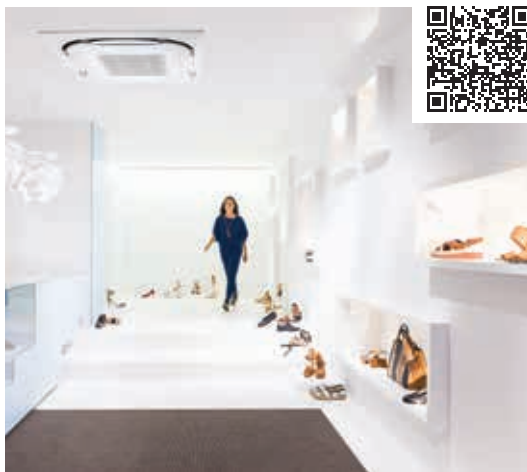
**Professional range wall mounted unit (C/FTXM-M)**

Attractive, wall mounted design. Practically inaudible: the unit runs so quietly, you will almost forget it is there. Fresher, cleaner air thanks to Daikin's Flash Streamer technology: you can breathe deep with no worries about impure air



**Comfort range wall mounted unit (FTXP-K3)**

A wall mounted unit which has the latest heat pump technology. Its advanced engineering and discreet design make it an ideal solution for any room in the house.



**Round flow cassette with autocleaning panel (FCAG-A)**

- › Running costs are reduced by 50% compared with standard solutions
- › Automatic filter cleaning.
- › Less time is required to maintain the filter: dust can be removed easily with a vacuum cleaner without opening the unit.



**Fully Flat cassette (FFA-A)**

- › Unique design in the market that integrates fully flat into the ceiling
- › Advanced technology and top efficiency combined
- › Most quiet cassette available on the market



**Ceiling suspended unit (FHA-A)**

Ideal for wide rooms with no false ceilings nor free floor space. Heat or cool down rooms with ceilings up to 3,8m easily! It can be mounted in corners or narrow spaces without any problem.





**Classic floor standing unit (FVXM-F)**

Low enough to be installed beneath a window sill, the unit can be installed against the wall or recessed. It has whisper-quiet operation and distributes the air and temperature efficiently throughout the room.



**Concealed units (FDXM-F3, FBA-A, FNA-A)**

Keep things clean and uncluttered with a concealed ceiling unit. They are compact enough to fit any interior and can be installed discreetly so that only the air vents are visible.

## Hybrid heat pump



### Heating

A Daikin Altherma hybrid heat pump automatically determines the most economic and energy efficient heating combination

- › **Heat pump operation:** the best available technology for optimising running costs at moderate outdoor temperatures
- › **Hybrid operation:** both the gas boiler and heat pump operate simultaneously to deliver the ultimate comfort
- › **Gas operation:** when outdoor temperatures drastically drop, the unit will automatically switch to gas operation mode

### Hot water

The gas condensing boiler's dual heat exchanger increases hot water efficiency by up to 15% when compared with traditional gas boilers

### Cooling

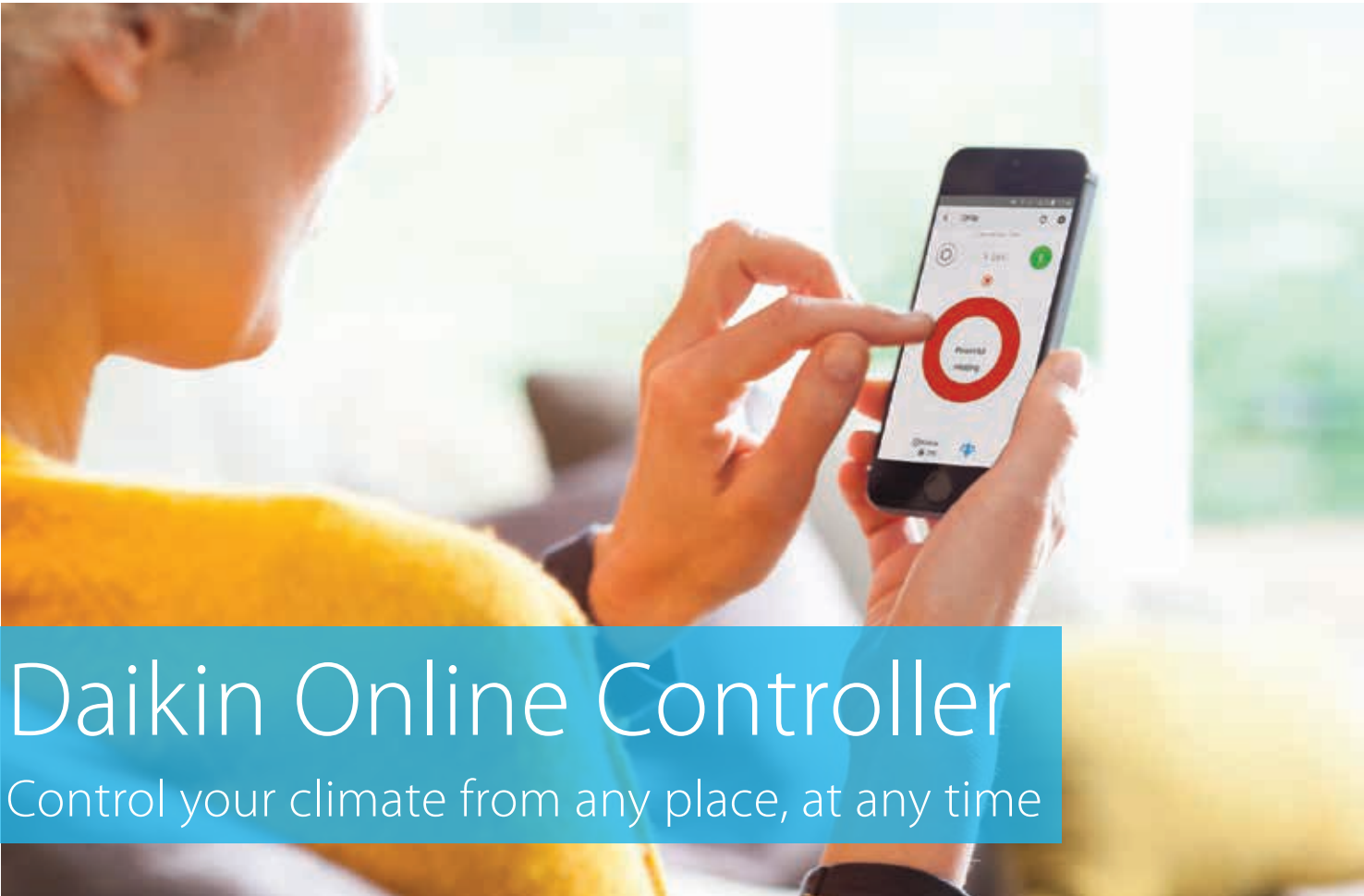
Incorporate cooling for a total solution that integrates seamlessly with underfloor heating or radiators

### Quick and easy installation

As the heat pump indoor unit and gas condensing boiler are delivered as separate units, they are easier to handle, operate and install

### Investment benefits

- › Combines with existing radiators; reducing the cost and disruption of installations
- › Coverage of heat loads up to 27 kW makes this unit ideal for renovation applications
- › Possible to connect to photovoltaic solar panels to optimise self-consumption of the electricity produced



# Daikin Online Controller

Control your climate from any place, at any time

Simply connect your unit to Wi-Fi and download the app to change the thermostat, set temperature schedules, review your energy consumption and develop your own "If this, then that" workflow. Compatible with our split, heating and Sky Air ranges, the Daikin Online Controller is ideal for year-round comfort in all applications.

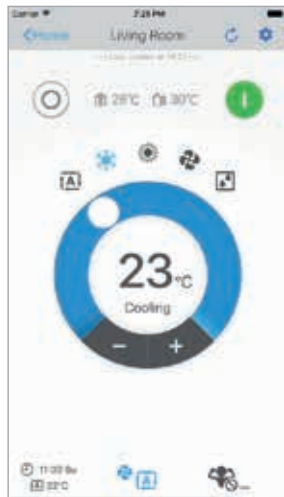


Note: in order to use the Daikin Online Controller application a Wi-Fi adapter needs to be installed inside your units. For more details on which adapters are required for which units, please consult your Daikin professional. The Wi-Fi adapter comes standard with the FTXJ-M Daikin Emura models and it is optional for all the other models.



**Control center**

**Identify** the rooms in your house to centrally control each unit. Access all features and control up to 50 units at once.



**Individual rooms**

**Adjust** the temperature, operating mode, air purification and fans for individual rooms with the interactive thermostat.



**Time scheduling**

Create different **schedules** with up to 6 actions a day for 7 days and activate specific operation modes.

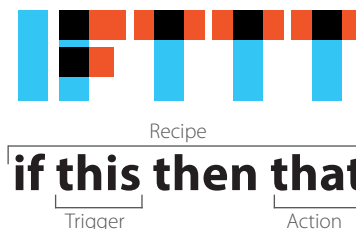


**Energy management**

**Monitor** your energy consumption on daily, weekly or yearly basis and see where you can save. (only applicable on Bluevolution models)

**IFTTT = If This Then That**

**IFTTT** empowers people to do more with the services they love. Connect over 500 apps, devices, and services and automate different triggers and actions to control your world, from automating simple tasks to transforming how you experience and manage your home and habits. Have a look below on some great examples you can do with the Daikin Online Controller and **IFTTT** :



**Receive a notification if your room gets too cold**

Get a notification when the room temperature drops below a certain point. Comes in handy during winter time!

**Let me know when someone turns on my Daikin unit.**

Get notified when your Daikin AC unit gets turned on. Maybe it was turned on by accident?

**If the outdoor humidity gets too high, turn on my Daikin AC unit in Dry mode.**

If the outdoor humidity rises above a certain point, you can decrease the indoor humidity by automatically enabling Dry mode on your Daikin AC unit.

**Activate Holiday Mode from Google Calendar when you're away**

In your calendar, mark your holiday with a specific keyword or phrase to automatically enable Holiday mode on your Daikin AC unit at the start of your holiday.

**Turn off your unit when you leave home**

Your smartphone makes use of your location information to automatically turn off your AC unit when you leave a certain area. To minimise the battery drain of your phone, your location is only periodically checked.

**If there is a notification from one of my Daikin units, send me a message.**

Sends you a message when there is a notification from one of your Daikin AC units.

Find out more at <https://ifttt.com/about>  
Set up your own actions and triggers and put the Internet to work for you.

## Trust Daikin

Daikin may not be a household name. After all, we don't make cars, TVs, fridges or washing machines. But we do make world-class heat pumps. In fact, millions of Daikin appliances have been fitted across Europe, Middle East and Africa.

Because we focus on doing only what we're best at: creating the most efficient heating, ventilation and air conditioning solutions, renowned for design excellence, quality and reliability.

So you can depend on Daikin for the ultimate in comfort, leaving you free to focus on other essentials.



### DAIKIN AIRCONDITIONING CENTRAL EUROPE HandelsgbH

campus 21, Europaring F12/402, A-2345 Brunn am Gebirge · Tel.: +43 / 2236 / 32557 · Fax: +43 / 2236 / 32557-910 · e-mail: office@daikin.at · www.daikin.bg

Daikin products are distributed by:



ISO 14001:2015  
ISO 9001:2015

No. 03299/0  
No. 18728/0



The present publication is drawn up by way of information only and does not constitute an offer binding upon Daikin Europe N.V. / Daikin Central Europe HandelsGmbH. Daikin Europe N.V. / Daikin Central Europe HandelsGmbH have compiled the content of this publication to the best of their knowledge. No express or implied warranty is given for the completeness, accuracy, reliability or fitness for particular purpose of its content and the products and services presented therein. Specifications are subject to change without prior notice. Daikin Europe N.V. / Daikin Central Europe HandelsGmbH explicitly rejects any liability for any direct or indirect damage, in the broadest sense, arising from or related to the use and/or interpretation of this publication. All content is copyrighted by Daikin Europe N.V.

Hybrid Multi Catalogue 2017-2018 | Version October 2017  
We reserve the right for printing errors and model changes